

IRON FIST LIGHT DECOUPLED (IF-LD)

Active Protection System (APS)



General Dynamics Ordnance and Tactical Systems in cooperation with IMI Systems takes active protection to the next level with the new Iron Fist Light Decoupled (IF-LD) Active Protection System (APS). IF-LD is an easily configured add-on system applicable for armored platforms from light 4x4 vehicles up to medium and heavy Armored Fighting Vehicles (AFV).

The System's hard-kill concept is based on intercepting the threat by launching a small warhead and initiating it at a safe distance from the protected platform, at a precisely calculated moment, and defeating or destructing the threat through a shock-wave effect.

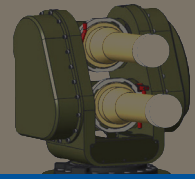
IF-LD provides 360-degree protection for close-range scenarios in both open terrain and urban environments. Through its two sensing techniques - a search-and-track radar and staring infrared sensor - the System offers robust and reliable threat detection, accurate trajectory

prediction as well as short reaction time in all terrain environments. The revolutionary design of the IF-LD minimizes the dimensions of the APS while maintaining combat efficacy and force protection. The system's SWaP facilitates rapid integration onto the full range of combat vehicles, and opens new possibilities to upgrade legacy platforms where size, weight and power constraints are a challenge.

Most Capable Active Protection System to Defeat the Widest Array of Threats

- Easy Integration
- Minimal SWaP on Vehicle
- Open Architecture and Modular Design
- Reliable Threat Detection and Defeat

IRON FIST LIGHT DECOUPLED (IF-LD) ACTIVE PROTECTION SYSTEM



Operational Characteristics:

- Protection against RPGs, and ATGMs and RRs
- Rapid reaction time for short range RPG engagement
- 360° coverage, high elevation angle
- Two independent sensing techniques (RF and IR)
- Operational in both open terrain and urban environments
- Situational Awareness based on 360° HD camera coverage
- Hostile fire detection (HFD) and small arms ammunition burst detection

Integration Features:

- Lightweight (725 lbs [329Kg] for overall platform)
- Small dimensions and low silhouette
- Bolt on, no penetration to vehicle structure
- Low power draw from the vehicle (Steady State 610W, Peak 820W)
- HMI can be hosted on existing commander's display or dedicated interface
- Network output of threat type, launch location, and slew to cue

Safety

- Small blast interceptor, minimal collateral damage
- Insensitive munition (IM) explosive
- Hardware and software mechanisms for preventing false fire
- Fuzing redundancy and fail-safe initiation



MA-1X



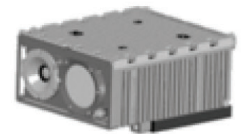
MCU-1X



LCU-2X



Launcher-2X



Optics-4X



Radar-4X

GENERAL DYNAMICS
Ordnance and Tactical Systems

In cooperation with:

IMI SYSTEMS